



# Gateway to Science NEWS

*It's Fun...It's Cool...It's Awesome...It's Science*

## High Prairie Partners Plan for Expansion

The partner organizations in the Frances Leach High Prairie Arts & Science Complex have spent the past several months considering options to increase our space to accommodate the tremendous growth in our programs. The options considered were to either expand our current facility or to renovate the World War Memorial Building in downtown Bismarck. While the High Prairie Vision Council was excited about the possibility of contributing to the revitalization of downtown Bismarck, after much research and discussion with community leaders, weighing the pros and cons of such a move, the Council voted to expand our current location on Schafer Street. One concern that was raised by all user groups was the parking, which is limited downtown. The current complex has plenty of free parking, easy access for interstate traffic, and outdoor space for exploring nature and launching rockets. We also like the proximity to BSC with whom we have developed a great working partnership.

The first priority is expansion of Gateway to Science. That will lead to a remodel of the current facility for use by other anchor organizations. Architectural renderings are being developed, and the process will involve gathering information and input from anchor groups at High Prairie. Upon completion of that process, a campaign committee will be formed and the fundraising effort will begin. If all goes well, we expect to break ground for Gateway to Science expansion by Summer, 2011.

## 11<sup>TH</sup> ANNUAL ENVIRONMENTAL FESTIVAL A SUCCESS!

On March 17th, fifth grade teachers and their students attended our 11th annual Environmental Festival. This year we had 22 presentations on a variety of topics related to environmental science. Each presentation was given by professionals in their field. About 1,000 students learned about recycling, pollution, coal mining, the science of air quality, weather, energy and much more! Each year, the objective of the Festival is to increase students' understanding of environmental issues and enhance the curriculum presented at the fifth grade level. Students are also introduced to possible career choices in a variety of environmental fields.



**"A Soil Experience" by USDA**



**"Recycling/Energy Reduction Measures" by City of Bismarck**

[www.gscience.org](http://www.gscience.org)



### UPCOMING EVENTS

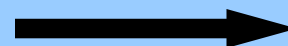
#### NANO DAYS

**SATURDAY, MARCH 27TH  
FROM 1:00PM TO 4:00PM**

- ⇒ FIELD TRIPS
- ⇒ SOUND OF SCIENCE- Jun. 5th
- ⇒ ROCKET DAY- July 17th
- ⇒ BUBBLE BLISS- Aug. 14th

[ For more information see page 2 ]

CHECK OUT OUR SUMMER  
INSERT



### FRANCES LEACH ARTS & SCIENCE SUMMER CAMP IS BACK!!!

August 9th-13th

Super Summer a collection of science, art, music and theater sessions - all in one camp!

Watch for future information on our WEBSITE

#### Exhibit Gallery Hours:

Monday - Thursday: 12Noon - 7PM  
Friday and Saturday: 12Noon - 5PM  
Closed on Sundays

#### Office Hours:

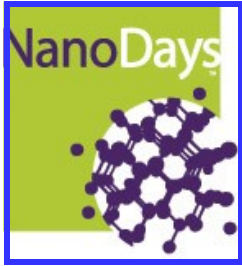
Monday - Friday  
9AM to 3PM

#### Admission Rates:

Adults: \$5.00  
Children: \$2.00  
Under 4: FREE with adult  
Members are always FREE!



## Looking Ahead to Our Spring & Summer Events



**NanoDays 2010 is scheduled for March 27<sup>th</sup> from 1-4 pm. This event is free and open to the public.**

Find out how small “nano” really is and learn about this current hot topic in science. This year’s event includes new hands-on activities, including a game of Stretchability, an experiment to see how a scanning probe microscope works, and more. Nano may be the small technology that creates big opportunity!

Christie, our Program Coordinator, recommends the following website— [www.nisenet.org](http://www.nisenet.org) for more Nano Technology!



June 5th- **The Sound of Science**- 1-4 pm

Announcing Gateway to Science’s **NEWEST EVENT!** Want to know how your ears hear? Or how your musical instrument works? Or maybe you are just curious about how sound is created. Bring your family and friends to “The Sound of Science”, where you’ll explore hands-on activities to find out the answers to these questions and more. This event is free and open to the public. Doesn’t it “sound” like fun?



July 17 - **Family Rocket Day** - 12:30-3:30 pm

Come to Family Rocket Day to build your own rockets and launch them during the event.



August 14 - **Bubble Bliss** - 1-4 pm

Join us in some good, clean and soapy fun at Bubble Bliss this summer.

As a reminder, registration is not required for these events. The events are always free, kits for certain projects are sold separately. Go to our website [www.gscience.org](http://www.gscience.org) for more information.

## LOOKING BACK ON OUR WINTER EVENTS



The Portable StarLab Planetarium

Winter Wonderland featured StarLab portable planetarium. All the activities were free, including admission to the Exhibit Gallery. A big **THANKS** to **Starion Financial** for their sponsorship!

It was an evening of fun, guests were able to take home the planespheres that they made on site. They even learn how to space walk! Everyone was excited to learned about astronomy in many fun ways! **The highlight was learning about the Planetarium.**



Suzuki students performing in the Gallery

The Suzuki School of Music provided entertainment.

Sixty-nine people attended this event on a very cold and snowy night!

**More Winter Events Next Page**



Celestial Sphere



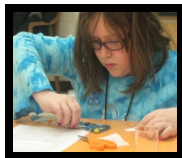
Making plane spheres

**Da'Genius daVinci** at the Frances Leach High Prairie Arts and Science Complex was a success.



This hands-on, action-filled day featured the life, times, and brilliant work of **Leonardo daVinci**. At Gateway to Science students learned about "Renaissance Science". **daVinci** was fascinated with flying machines, the power of steam, and illusions. Students participated in hands-on activities that explored all these areas. Twenty-one kids attended this year's camp.

**Science Clubs** – Kids in Young Scientists Club and Science Discovery Club had a great time this spring, exploring paper airplanes, candy chemistry, & other fun science concepts.



**Katie discovers which dyes are in her candy!**



**1st Place—"Mandan Honors"-Mandan High School**



**2nd Place—"JMB3" Horizon Middle School**



**3rd Place—"Triple Thick Shakes"-Century High School**

**WIDGET Contest** - Gateway to Science again teamed up with the North Dakota Society of Professional Engineers, Chapter 3, to host the 6<sup>th</sup> annual WIDGET Contest. The winners of this fun, creative engineering contest are pictured above. The first place team was awarded \$200 and an invitation to the NDSPE Banquet. Second and third place teams were awarded \$100 each.

**We would like to extend a special Thank You to the following donors for 2010**

**Exhibit Adoptions**

**Capital Credit Union**-Frozen Shadows  
**North American Coal Royalty Co.**-Simple Machines Tripod  
**Robin & Jennifer Haaland** - Hand vs. Heart  
**Larry & Joan Klemer** - Inclined Plane & Solar Car  
**Robert & Josette Severson**-Electricity Bench  
**Cory Wrolstad**-Lighting Ball

**Environmental Festival**

AE2S; Basin Electric Power Coop; Stutsman County SCD; The Coteau Properties Co.; Burleigh County SCD; ND Chapter of the American Public Works Association; ND Water Environment Association; ND Forest Service; MDU Resources; Burlington Northern Santa Fe Foundation; Great River Energy; ND Water Environment Association; ND Natural Resources Trust

**Corporate Donations/Foundations**

Bismarck Elkettes; Farwest Rotary Club; FEBCO-Comfort Inn & Suites; Institute of Museum & Library Services; MDU Resources Foundation; Northern Improvement; Karol K. Riedman, CPA; Sam's Club Foundation; Tesoro; Tom and Frances Leach Foundation

**Individual Donations**

Anonymus; Brad & Claudia Ballweber; Patricia Churchill; Lawrence & Karen daSilva; Steve Durow & Nancy Koch-Durow; Jerry & Nancy Obritsch; Frank & Kay Koch; Terry & Corinne Lee; Michael & Karol Riedman; Dave & Sarah Ripley

**Dave & DeLaine Poppke Scholarship Fund:**

Irene Carter; Dave & Cindy Poppke; Richard & Amy Poppke; Sol & Sybil Wezelman

**Event Sponsors**

Starion Financial-Winter Wonderland  
 NDSPE-2010 WIDGET Contest

**New & Renewing Members**

**Sustaining**

Dana & Sandy Dodd; Vickie & Mike Gunsch; Tom & Katie Hutchens; Gaylord Kavlie; Lance Loken; Kevin & Hildy Oberlander; Dave & Connie Sprynczynatyk; Karen & Alan Traeholt; Sol & Sybil Wezelman; Gregg & Sandy Wiche

**Family Plus**

Randy Blinegar; Ryan and Kate Bleth; Art & Shirley Carlson; Elizabeth Lundstrom, Susan Riedman

**Family**

Gerald & Dazhe Bitz; Bonita Caron; Russell Dawson; Michael Duffy; Ste Durow & Nancy Koch-Durow; David Gross; Robin & Jennifer Haaland; George & Jean Hiltz; Brendan Joyce; Douglas & Petrea Klein; Rocky Lalvani; Mark & Susan Liebig; David & Dawn Mayer; Rebecca Ottosen; Karen Rickrode; Amy Robeson; Linda & Mark Schlafman; Kevin & Janet Steinbach; Kevin & Janine Vining; Eric Wanlich; Marisa Waterman; Pete & Jane White; Andee Woodmansee

**Grandparents**

Patricia Churchill; Michael & Germaine Senger

**Individual**

Karen Ryberg

**Senior**

Dave and Sarah Ripley (2)

**Student**

Janette & Michael Fetch; Ramona Redding Lopez; Dan and Lisa Rouse; Julie & John Welsch



**Join Gateway to Science Today!**

**Top 5 Reasons to Join Gateway to Science**

- > Free unlimited admission to the Exhibit Gallery
- > Reciprocity admission to fellow ASTC Centers around the world
- > Special Savings on programs and Birthday Party Packages throughout the year
- > Subscription to the Gateway to Science NEWS and notices of upcoming events and programs
- > Family Plus & Sustaining memberships include FREE admission for a guest family

**MEMBERSHIP APPLICATION FORM**

Name: \_\_\_\_\_  
 Address: \_\_\_\_\_  
 City: \_\_\_\_\_ State: \_\_\_\_\_  
 Zip Code: \_\_\_\_\_  
 Email Address: \_\_\_\_\_  
 Phone #: \_\_\_\_\_

How did you hear about us: (optional)

- Friend/Relative
- Website or e-NEWS
- Special Event Promotion
- Gateway to Science NEWS

Please choose a Membership level:

- Sustaining \$125
- Family Plus \$70
- Family \$50
- Grandparents \$45
- Individual \$30
- Student \$20
- Senior (62+) \$20
- Additional Donation \$ \_\_\_\_\_

**Total Amount Enclosed: \$ \_\_\_\_\_**

**Please mail along with payment to:**

Gateway to Science or  
 stop by the office at  
 1810 Schafer Street, Suite 1  
 Bismarck, ND 58501-1218

\*Note: Your membership card will be processed within 5-7 business days after we receive your Membership application form.



Gateway to Science Center, Inc.  
 1810 Schafer Street Suite 1  
 Bismarck ND 58501-1218

Nonprofit Organization  
 U S Postage Paid  
 Permit No. 419  
 Bismarck, ND 58504



*DON'T MISS NANODAYS  
 ON MARCH 27TH!*

**Contact Information**

GATEWAY TO SCIENCE  
 1810 Schafer Street, Suite 1  
 Bismarck ND 58501-1218  
[www.gscience.org](http://www.gscience.org)  
 701.258.1975

**Staff Members**

Beth Demke  
**Executive Director**  
 Liliana M. Norby  
**Communications Specialist**  
 Christie Weixel  
**Program Coordinator**

**Bidding a Fond Farewell...**



The staff and Board of Directors extends a fond farewell to Jennifer Rechlin who has recently resigned after 11½ years with Gateway to Science. Jennifer began as the Director of Operations in 1998, and she served as Exhibits Coordinator for the past 5 years. Several exhibitions were developed under Jennifer's direction, including "Rollercoasters," "Simple Machines," "Light & Color," and the most recent "Mirror Images." Her meticulous attention to detail ensured that all of our exhibits are visitor-friendly, informatively signed and well maintained. In her retirement, Jennifer will enjoy more time for travel. We miss you, Jennifer, but look forward to seeing you in the gallery and at special events as a supportive member and visitor!

**Welcoming a New Staff Member...**



Gateway to Science welcomes Liliana Norby, who recently joined our staff as Communications Specialist. Liliana will utilize her extensive public relations background to maintain communication with our members, supporters and visitors. Her responsibilities will include the website, newsletter, media releases and program registration. Liliana and her husband, Aaron have five children, their youngest, Sarah is in 3rd grade.

**Go Green! Save postage and paper by signing up online to receive our Newsletter via email**





# Gateway to Science 2010 Summer Camps Registration Form

Summer is almost here and we are once again offering a variety of fun and educational summer camps.

You may register now by:

- ⇒ Mailing this registration form with payment to: Gateway to Science 1810 Schafer Street, Suite 1, Bismarck, ND 58501-1218.
- ⇒ Online at [www.gscience.org](http://www.gscience.org)
- ⇒ Call 701-258-1975 or stop by our office.

## REGISTRATION FORM

**ALL CAMPS ARE LIMITED TO 15 STUDENTS. THE COST OF THE CAMP INCLUDES ALL MATERIALS. A NON MEMBER PRICE INCLUDES A ONE-YEAR STUDENT MEMBERSHIP TO GATEWAY TO SCIENCE**  
 \*Student must be entering the grades indicated in Fall 2010\*

Child's Name: \_\_\_\_\_

Grade (entering in Fall 2010): \_\_\_\_\_

Parent's Name: \_\_\_\_\_

Address: \_\_\_\_\_

City: \_\_\_\_\_

State: \_\_\_\_\_ Zip: \_\_\_\_\_

Phone #: \_\_\_\_\_

Alternate Phone #: \_\_\_\_\_

Email Address: \_\_\_\_\_

Emergency Contact: \_\_\_\_\_

Photos of my child taken during camps may be used for Gateway to Science publications & media.

Parent or Guardian Signature \_\_\_\_\_

Camp Name	Member	N/Member	Total Paid
Lego A	\$45	\$65	
Lego B	\$45	\$65	
Lego C	\$45	\$65	
Build It!	\$60	\$80	
Astronaut	\$60	\$80	
Paleontology	\$35	\$55	
Lego D	\$45	\$65	
Robotics	\$45	\$65	

PURCHASE A ONE-YEAR MEMBERSHIP AND SAVE!

Family Plus \$70.00 Family \$50.00 Student \$20.00

### LEGO® CAMPS –DEADLINE JUNE 22ND

June 28-30 (Mon-Wed)

CAMP A 9am-noon/Grades 3-4

CAMP B 1pm-4pm/Grades 5-6



### LEGO® CAMP–DEADLINE JUNE 29th

July 6-8 (Tues-Thurs)

CAMP C 9am-noon/Grades 5-6



### LEGO® CAMP-DEADLINE JULY 13TH

July 19-21(Mon-Wed)

CAMP D 1pm-4pm/Grades 3-4



### LEGO® ROBOTICS CAMP-DEADLINE JULY 20TH

July 26-28(Mon-Wed)

One Session Only

1pm-4pm/Grades 4-6



### BUILD IT! RACE IT!-DEADLINE JUNE 29TH

July 6-9 (Tues-Fri)

One session only

1pm-4pm/Grades 3-4-5

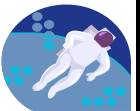


### ASTRONAUT CAMP-DEADLINE JULY 6TH

July 12-15 (Mon-Thurs)

One Session only

9am-noon/Grades 2-3-4



### PALEONTOLOGY EXPERIENCE-DEADLINE JULY 13TH

July 19, 20, 22 & 23 (Mon-Tue/Thurs-Fri)

One Session Only

10am-11:30am/Grades 1-3



### Camp descriptions on reverse

FRANCES LEACH ARTS & SCIENCE SUMMER CAMP IS BACK!!!  
 August 9th-13th

This exciting camp is a combination of classes by all partners at High Prairie. Gateway to Science will be offering the following fun, hands-on classes: Smells Like Fun!, Water Wonders, Move It!, Electrifying Experience, Acids & Bases, and Don't Drink the Water! Don't forget to Check our Website



**Lego® Camp**



**Astronaut Camp**



**Paleontology Experience**

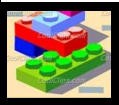


**Build It Race it! Camp**

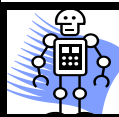


**Lego® Robotics Camp**

### CAMP DESCRIPTIONS



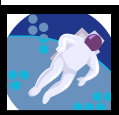
**Lego® Camps** – Learn about structures by building towers, bridges, cars, catapults and more!  
**CAMP A: Grades 3-4 CAMP B: Grades 5-6 CAMP C: Grades 5-6 CAMP D: Grades 3-4**



**Lego® Robotics Camp** – Build and program a LEGO robot. Student must have previously participated in one of our LEGO camps. **Grades 4-6**



**Build it, Race it!** – Build small cars that use different types of motors...and then race them! Participants will learn about the science of design, as well as how to use energy to make their cars reach the goal in record time. Don't get left behind – join us! **Grades 3-5**



**Astronaut Camp** – Find out what it's like to work at NASA! Practice for spacewalks, design the ultimate space suit, plan meals for the space station, and more hands-on fun! **Grades 2-4**



**Paleontology Experience** – Learn about paleontology from a real paleontologist! You'll learn about different types of fossils, simple excavation techniques, and North Dakota during the time of the dinosaurs! **Grades 1-3**

*Partial scholarships are available for summer camps through the Dave & DeLaine Poppke Scholarship Fund. Applications can be found on our website, or stop in for more information.*

**Girl Scout Troop Leaders: Your girls can earn their next Try-It patch at Gateway to Science!**

For more information or to schedule a visit call 701-258-1975 or visit our Website.

**Check us out Online!**

**www.gscience.org**